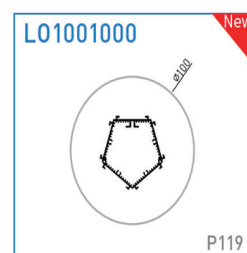
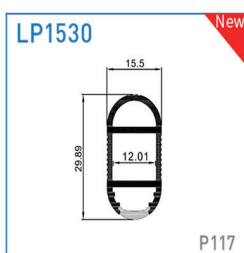
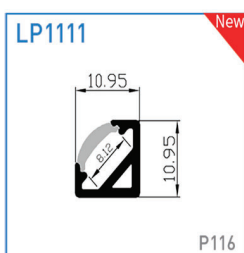
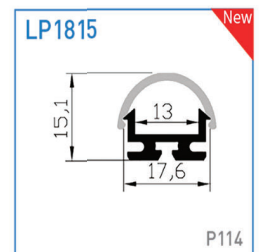
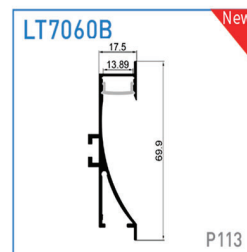
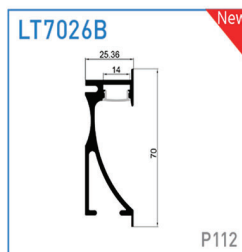
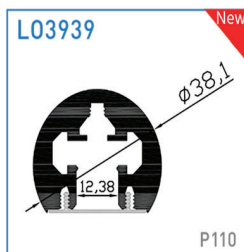
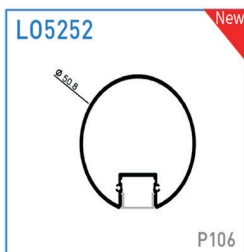




1.5

REGULAR PROFILE

The main characteristics of regular series products: small-sized, auxiliary lighting. Suitable for cabinet, wine cabinet, wardrobe, shelf, furniture, jewelry counter, etc





REGULAR LED PROFILE

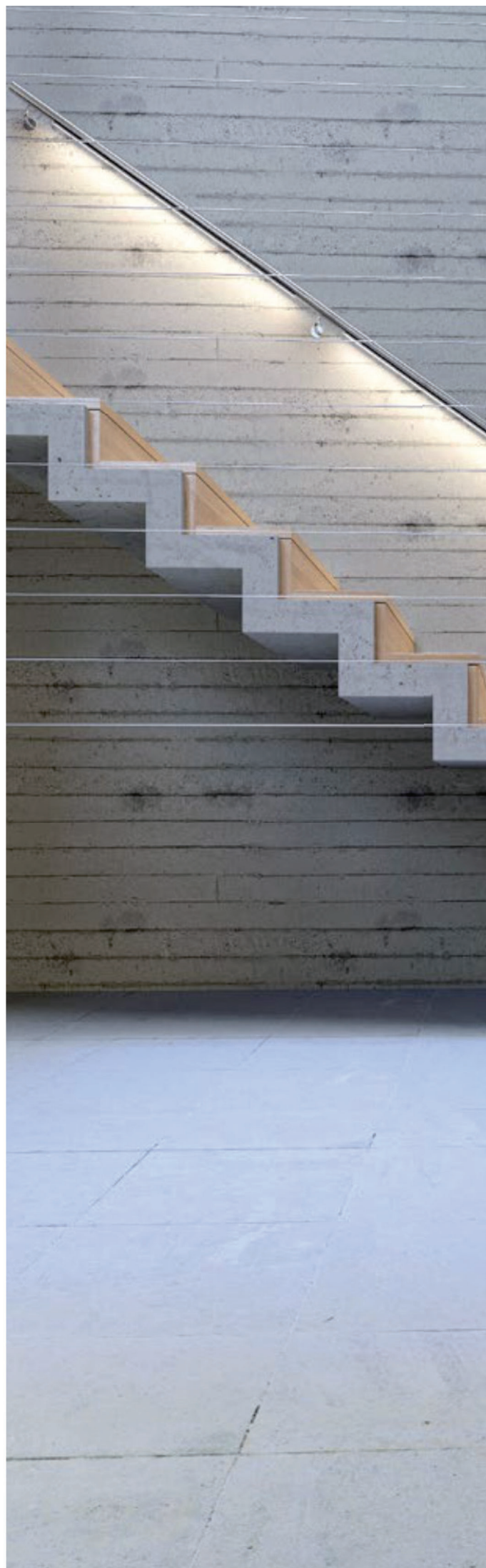
The main characteristics of regular series products: small-sized, auxiliary lighting. Suitable for cabinet, wine cabinet, wardrobe, shelf, furniture, jewelry counter, etc





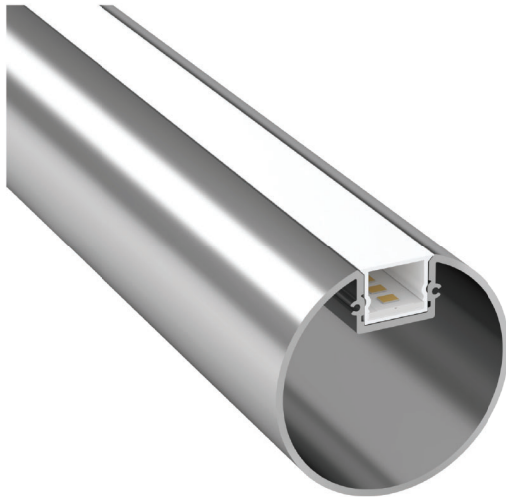
Handrail Profile

The LED handrail lamp is an integrated handrail lamp different from the guardrail lamp guardrail tube. It replaces the original non-lighting handrail. It is a new type of LED lamp. It adopts high quality aviation aluminum, which has excellent heat dissipation effect, simple shape, exquisite and smooth, and The protection grade is above IP40/65, and the long-life power supply is used to ensure the service life of 50,000 hours or more. Mainly used in stairs, commercial centers and guardrails

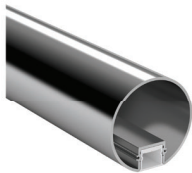




Handrail Profile

Model: L05252 New

The LED handrail lamp is an integrated handrail lamp different from the guardrail lamp guardrail tube. It replaces the original non-lighting handrail. It is a new type of LED lamp. It adopts high quality aviation aluminum, which has excellent heat dissipation effect, simple shape, exquisite and smooth, and The protection grade is above IP20/65, and the long-life power supply is used to ensure the service life of 50,000 hours or more. Mainly used in stairs, commercial centers and guardrails



Aluminum profile



90° connector coplanar



Holder



90° connector vertical plane



Rotational connector (135° -180°)



Straight connector



Outer end cap

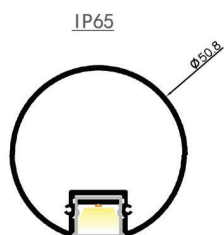
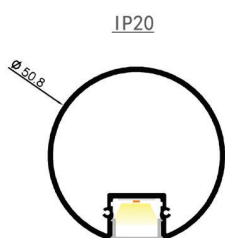


Accessories adhesive

Handrail Profile

Model: L05252 New

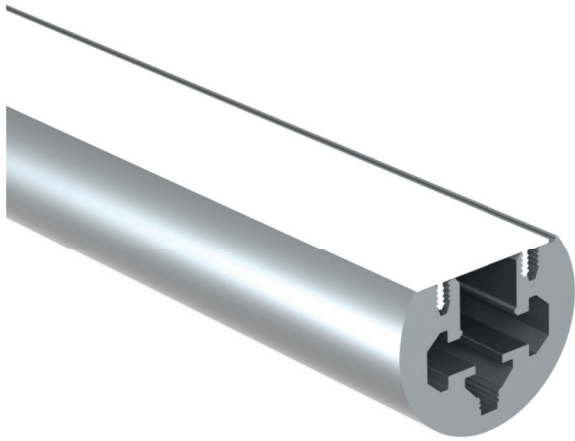
Material:	AL6063-T5
Surface:	Anodized/ Painting
PC cover:	Diffuser /Transparent /Opal/Black
Power:	8 W/m
Input voltage:	24VDC
Lamp beads:	120LEDs/m (2835)
Lighting source width:	8 mm
Available lengths:	0.5-3m
Application:	indoor lighting/ furniture lighting

LIGHTING SOURCE**SIZE**

IP20			
COVER	Trans/Opal/Diffuser	52522/52523 /52524	
COVER	Black	5252B	
END CAP	Hole W/O hole	52528/52529	

IP65			
COVER	Diffuser	18124	
COVER	Black	1812B	
LINNER ALUMINUM BAR		52525	
END CAP	Hole W/O hole	52528/52529	
END CAP	Hole W/O hole	18128/18129	

Handrail Profile
Model: L03939 New



The LED handrail lamp is an integrated handrail lamp different from the guardrail lamp guardrail tube. It replaces the original non-lighting handrail. It is a new type of LED lamp that can bent arbitrarily. It adopts high quality aviation aluminum, which has excellent heat dissipation effect, simple shape, exquisite and smooth, and The protection grade is above IP20/65, and the long-life power supply is used to ensure the service life of 50,000 hours or more. Mainly used in stairs, commercial centers and guardrails



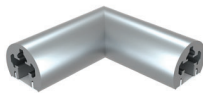
Aluminum profile



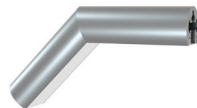
glass holder



Holder



90° connector coplanar



135° Solid connector



135° Connector plane



180° Connector



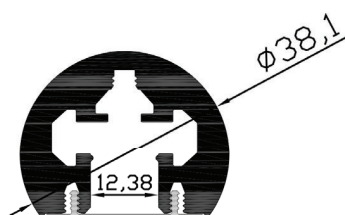
Outer end cap

REGULAR PROFILE

Handrail Profile

Model: L03939 



SIZE



Material:	AL6063-T5
Surface:	Anodized/ Painting
PC cover:	Diffuser /Transparent /Opal/Black
Power:	15 W/m
Input voltage:	24VDC
Lamp beads:	120LEDs/m (2835)
Lighting source width:	12 mm
Available lengths:	0.5-3m
Application:	indoor lighting/ furniture lighting

LIGHTING SOURCE



IP20/ IP65			
COVER	Trans/Opal/Diffuser	39392/39393 /39394	
COVER	Black	3939B	



REGULAR PROFILE

Model: *LT7026B* New



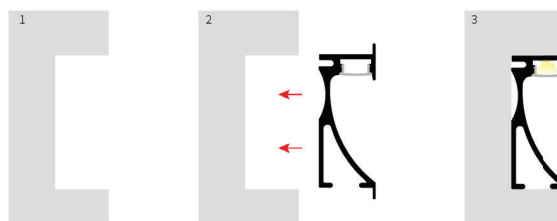
Material:	AL6063-T5
Surface:	Anodized/ Painting
PC cover:	Diffuser /Transparent /Opal/Black
Power:	14.4W/m
Input voltage:	24VDC
Lamp beads:	120LEDs/m (2835)
Lighting source width:	10 mm
Available lengths:	0.5-3m
Application:	Commercial lighting / Indoor lighting Decorative design



SIZE



INSTALLATION



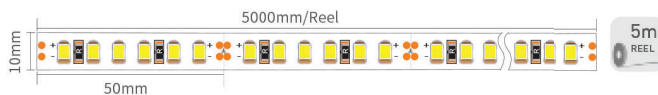
REGULAR PROFILE

APPLICATION



COVER	Trans/Opal/Diffuser	17072/17073 /17074	
COVER	Black	1707B	
END CAP	Hole W/O hole	70268/70269	

LIGHTING SOURCE

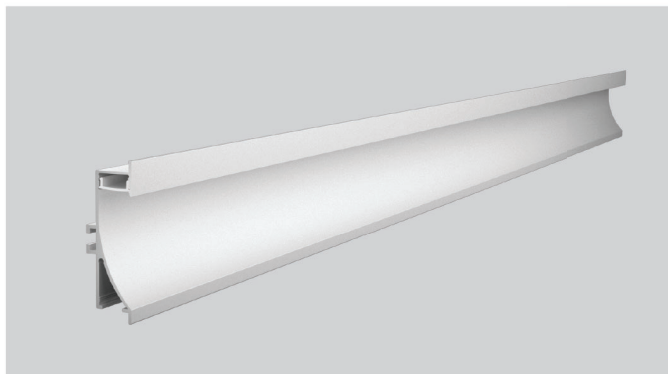


Model: *LT7060B* New

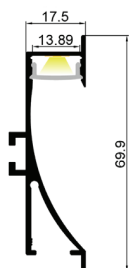


Material:	AL6063-T5
Surface:	Anodized/ Painting
PC cover:	Diffuser /Transparent /Opal/Black
Power:	14.4W/m
Input voltage:	24VDC
Lamp beads:	120LEDs/m (2835)
Lighting source width:	10 mm
Available lengths:	0.5-3m
Application:	Commercial lighting / Indoor lighting Decorative design

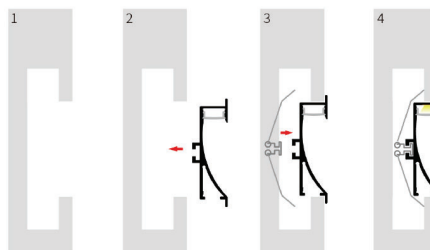
Silver
 Black
 White (ra9016)



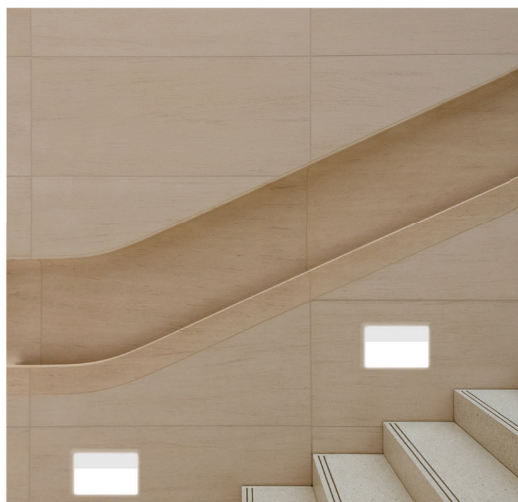
SIZE



INSTALLATION



APPLICATION



COVER	Trans/Opal/Diffuser	17072/17073 /17074	
COVER	Black	1707B	
END CAP	Hole W/O hole	70608/70609	
CLIP		2525S	

LIGHTING SOURCE



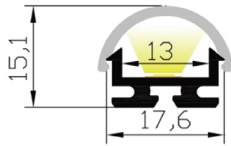
Model: LP1815 NEW



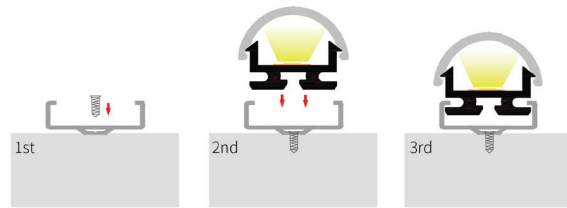
Material:	AL6063-T5
Surface:	Anodized/ Painting
PC cover:	Diffuser /Transparent /Opal/Black
Power:	8W/m
Input voltage:	24VDC
Lamp beads:	156LEDs/m (2835)
Lighting source width:	10 mm
Available lengths:	0.5-3m
Application:	Commercial lighting / Indoor lighting



SIZE



INSTALLATION



REGULAR PROFILE

APPLICATION



COVER	Trans/Opal/Diffuser	18152/18153/18154	
COVER	Black	1815B	
END CAP	Hole W/O hole	18158/18159	
END CAP	Hole W/O hole	18158/18159	
CLIP		15060	

LIGHTING SOURCE



PLATE ECS 0° WITH STUDS

- Mounting plate
- With studs to prevent sliding in the longitudinal direction
- Material: PC
- Colour: white

TECHNICAL DATA

Storage temperature	-30...+80°C
Working temperature	+20...+45°C
Dimensions LxWxH	33.45x18.7x6.5mm
Weight	0.002KG

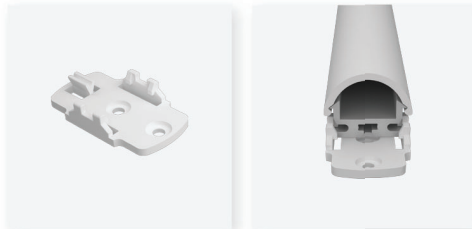
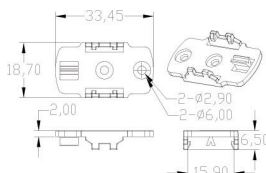


PLATE ECS 15°

- Mounting plate
- With studs to prevent sliding in the longitudinal direction
- Material: PC
- Colour: white

TECHNICAL DATA

Storage temperature	-30...+80°C
Working temperature	+20...+45°C
Dimensions LxWxH	35x20.8x10.8mm
Weight	0.002KG

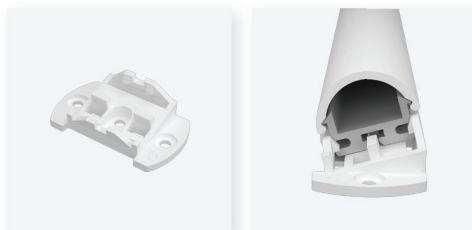
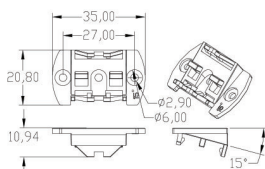


PLATE ECS 30°

- Mounting plate
- With studs to prevent sliding in the longitudinal direction
- Material: PC
- Colour: white

TECHNICAL DATA

Storage temperature	-30...+80°C
Working temperature	+20...+45°C
Dimensions LxWxH	35x20.8x14.8mm
Weight	0.002KG

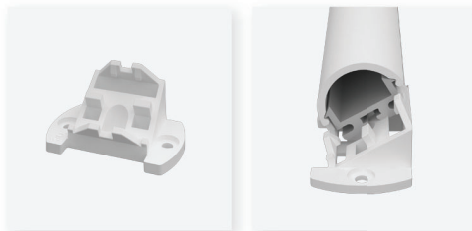
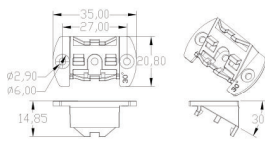
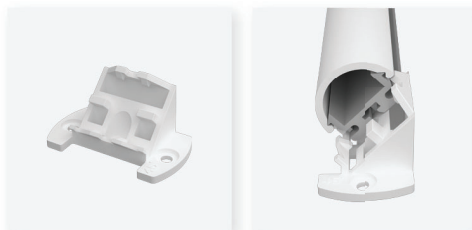
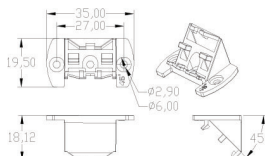


PLATE ECS 45°

- Mounting plate
- With studs to prevent sliding in the longitudinal direction
- Material: PC
- Colour: white

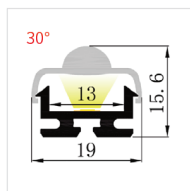
TECHNICAL DATA

Storage temperature	-30...+80°C
Working temperature	+20...+45°C
Dimensions LxWxH	35x19.5x18.1mm
Weight	0.002KG

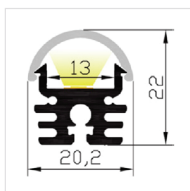


RELATED PRODUCTS (BY FOLLOWING CONNECTORS)

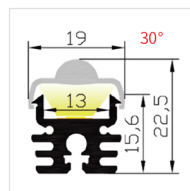
LP1815B



LP1820



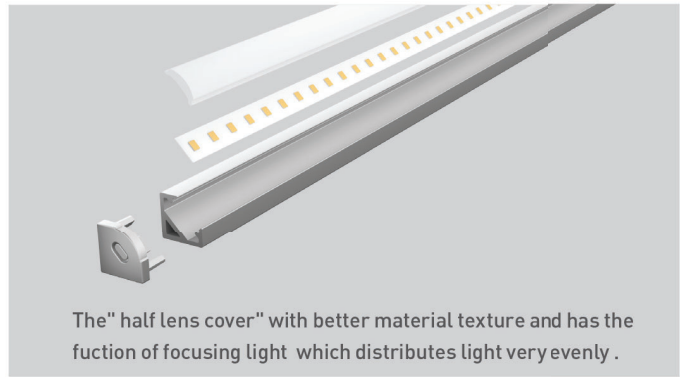
LP1820B



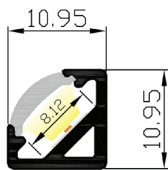
Model: LP1111 New



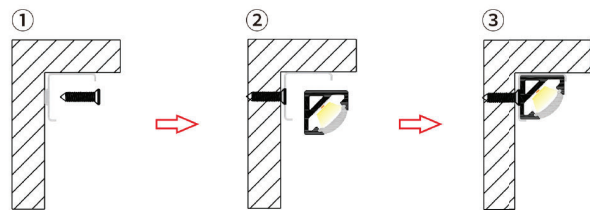
Material:	AL6063-T5
Surface:	Anodized/ Painting
PC cover:	Diffuser /Black
Power:	8 W/m
Input voltage:	24VDC
Lamp beads:	120LEDs/m (2835)
Lighting source width:	8 mm
Available lengths:	0.5-3m
Application:	Commercial lighting / Indoor lighting Decorative design



SIZE



INSTALLATION



REGULAR PROFILE

APPLICATION



COVER	Diffuser	10094	
COVER	Black	10094	
END CAP	Hole W/O hole	11118/11119	
CLIP		11110	

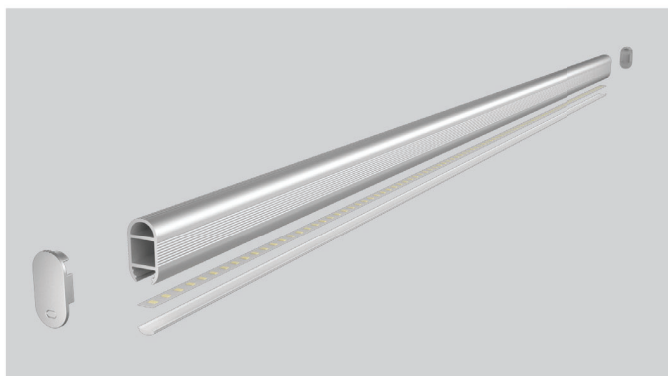
LIGHTING SOURCE



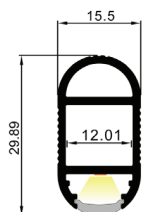
Model: LP1530 New



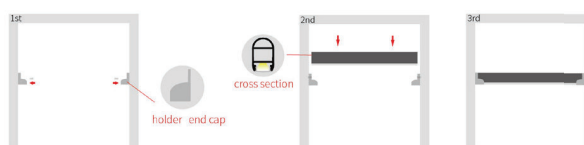
Material:	AL6063-T5
Surface:	Anodized/ Painting
PC cover:	Diffuser/Black
Power:	14.4 W/m
Input voltage:	24VDC
Lamp beads:	120LEDs/m (2835)
Lighting source width:	10 mm
Available lengths:	0.5-3m
Application:	Commercial lighting / Indoor lighting Decorative design



SIZE



INSTALLATION



APPLICATION



COVER	Trans/Opal/Diffuser	14142/14143 /14144	
COVER	Black	1414B	
HOLDER	Hole	15308-1	
HOLDER	Hole	15308-2	
HOLDER	Hole	15308-3	
HOLDER	Hole	15308-4	
END CAP	Hole	15039	
TRESTLE		1530017	

LIGHTING SOURCE

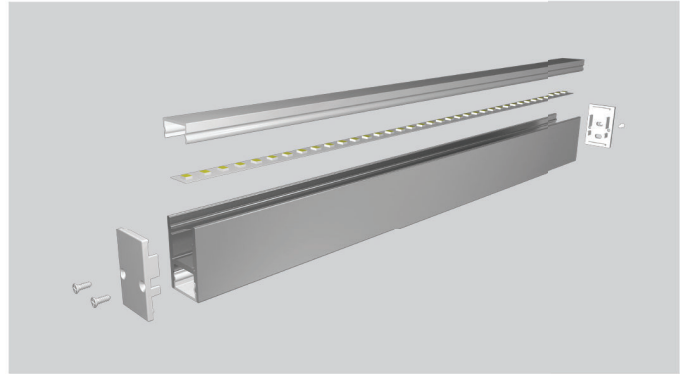


REGULAR PROFILE

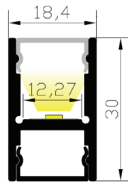
Model: LP1830 New



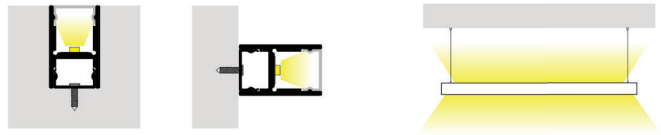
Material:	AL6063-T5
Surface:	Anodized/ Painting
PC cover:	Diffuser/Black
Power:	14.4 W/m
Input voltage:	24VDC
Lamp beads:	156LEDs/m (2835)
Lighting source width:	10 mm
Available lengths:	0.5-3m
Application:	Commercial lighting / Indoor lighting



SIZE



INSTALLATION

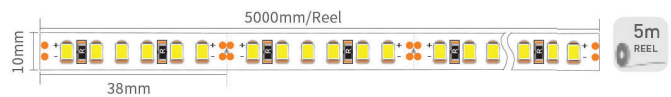


APPLICATION



COVER	Trans/Opal/Diffuser	1813B2/1813B3/1813B4	
COVER	Black	1813BB	
END CAP	Hole W/O hole	18308/18309	
CLIP		18300	
PENDANT		LSXXXXSDZJ	

LIGHTING SOURCE

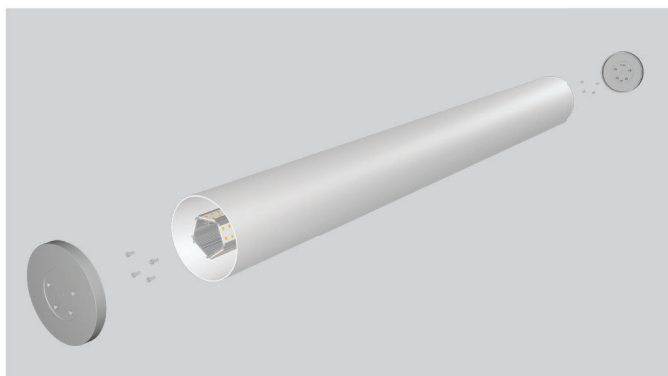


Model: *LO100100* New



Material:	AL6063-T5
Surface:	Anodized/ Painting
PC cover:	Diffuser/Black
Power:	8 W/m
Input voltage:	24VDC
Lamp beads:	120LEDs/m (2835)
Lighting source width:	8 mm
Available lengths:	0.5-3m
Application:	Commercial lighting / Indoor lighting Decorative design

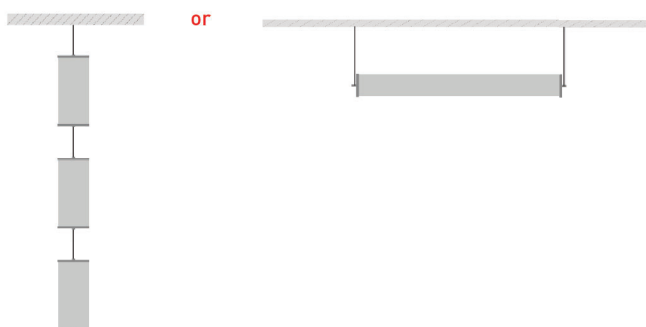
Silver
 Black
 White
(ra9016)



SIZE



INSTALLATION



APPLICATION



COVER	Smooth	1001004		
COVER	Black	100100B		
END CAP	Hole	W/O hole	1001008/1001009	
CLIP		2020H		

LIGHTING SOURCE

